



Source: In Design  
 Edition:  
 Country: UK  
 Date: Sunday 1, March 2009  
 Page: 15  
 Area: 456 sq. cm  
 Circulation: Pub Stmt 10000 Monthly  
 BRAD info: page rate £2,090.00, scc rate £0.00  
 Phone: 01622 619796  
 Keyword: Lomme

Technology

# Let's GET technical

## How much is your beauty sleep worth? ▼

**WHAT WOULD** you pay for a fantastic night's sleep? Would you fork out just short of £40,000? It's hard to say just how many people would be able to afford the new **Lomme** bed right now, but it certainly looks elegant and stylish.

Lomme was an idea by Camberwell Art student Agnieszka Bernacka, who leads the team that created the Lomme bed of today. Lomme stands for 'Light Over Matter Mind Evolution,' which means the body is influenced by light transforming mind and matter. Lomme is a place to go that is safe, relaxing and comfortable. And just in case you were wondering, there is enough space for two people. Well it's not much fun sleeping on your own, is it? The design team say that the combination of all elements of nature, art, design and functionality of colour, light, sound and massage therapy creates a new understanding of how to improve quality of life and get a better understanding of oneself. 'What's this got to do with technology,' I hear you ask. Well it comes with sexy lighting, a muscle relaxing system and an iPod dock enabling you to listen to relaxing tunes while drifting off to sleep. Better start saving because at £37,747 it doesn't come cheap. For more details: [www.lomme.com](http://www.lomme.com)

## Fool the burglars with Fake TV ▲

**DO YOU** often worry that you'll return

from holiday to find all your valuables gone? Instead of leaving the lights or TV on, why not invest in a fake TV? Fake TV gives property owners a new and convincing way to make their homes look occupied, making them less likely to become targets for crime. The TV gives off light in the way a real television does, so from the outside of your home it looks like someone is watching TV.

And you needn't worry about high electricity bills or your carbon emissions. A built-in light sensor turns FakeTV on at dusk and it stays on for a preset time. The TV's super-bright, computer-controlled LED's faithfully reproduce the scene changes, colour shifts, flicks and fades of a real television. Viewed from outside the home, the effects of Fake TV are indistinguishable from the real thing. It won't break the bank either at a credit crunch busting £29.

For more details : [www.FakeTV.com](http://www.FakeTV.com)

**Kensington Home Technology's Malcolm Stewart offers InDesign readers tips on how to install a home cinema.** ▶

**NOT MANY** people can have the luxury of a dedicated cinema room, but if your client is determined to have

a home cinema, there are a number of things you can do to lessen the impact on the room.

A great tip is that the speakers can be recessed into the wall or ceiling and most products have grills that can be painted, so that they blend in with the decor. B&W (01803 221 500 [www.bowers-wilkins.co.uk](http://www.bowers-wilkins.co.uk)) and TRIAD speakers (Pulse Marketing 01279 718 884 [www.pulsemarketing.org](http://www.pulsemarketing.org)) have a wide range of products to fit most budgets and requirements. Prices start from around £150.

The projection screen can be either recessed into the ceiling (not always easily possible in residential properties) or mounted on the ceiling or wall. A simple box decorated to match will hide the case effectively. If your client has space in the ceiling void, the projector can be mounted on a simple lift mechanism to drop the unit in and out of the ceiling as required. If you cannot go into the ceiling, the projector can be hidden using a simple ceiling mounted box decorated to match.

The neatest solution may be to have some full height joinery built, which would house the front speakers, projection screen, DVD collection and AV hardware discreetly. Abbeywood has some good designs (give them a call on 0117 956 8992).

Don't forget seating. Many companies produce L shaped sofas – perfect for relaxing on while watching a film. For ultimate comfort, try Action Bag's big foam filled floor cushions available from Andrew Morgan Sofas (020 7371 7360) from £350.

To recreate the cinema experience in your client's property, without compromising on the layout, employ a qualified professional to advise on speaker positions, hardware choice, joinery design and set-up. Speak to CEDIA for an Installer in your area (01480 213744 [www.cedia.co.uk](http://www.cedia.co.uk)).

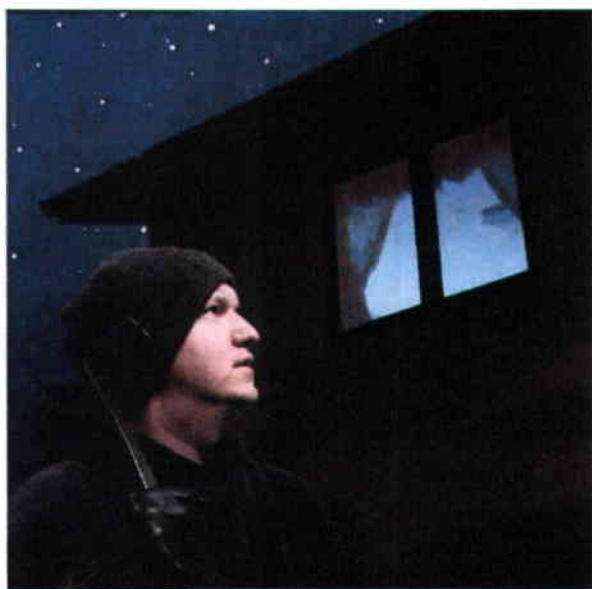


Source: In Design  
Edition:  
Country: UK  
Date: Sunday 1, March 2009  
Page: 15  
Area: 456 sq. cm  
Circulation: Pub Stmt 10000 Monthly  
BRAD info: page rate £2,090.00, scc rate £0.00  
Phone: 01622 618796  
Keyword: Lomme

> durrants



**Left:**  
Malcom Stewart in  
his comfort zone



**Above:**  
Fake TV in action

**Below:**  
Your £40,000  
comfort bubble?

